

PRICE: THREEPENCE.

# Lowerhouse Cricket Club

OFFICIAL HANDBOOK  
OF THE  
**BAZAAR**

ST. JOHN'S SCHOOL, GANNOW LANE,  
On Thursday, Friday and Saturday,  
Nov. 15th, 16th & 17th, 1934.

Opens each day at 3 p.m.



#### PRICES OF ADMISSION:

Single Season Tickets - - 1/6  
Thursday - 1/-; after 6 p.m., 6d.  
Friday - - 1/-; after 6 p.m., 6d.  
Saturday - - - - 6d. all day  
Children under 14 - Half-price

No Bazaar Checks taken for  
Admission.



"No matter what is done or said, man,  
The public's greatest friend is REDMAN."

PEOPLE WHO LIKE GOOD TEA

SAY THAT—

# REDMAN'S Bonus Digestive Tea

IS THE BEST EVER.

It has a flavour all  
its own, which pleases  
everybody, and it is  
very economical in use

per quarter  $8\frac{1}{2}$  d. per quarter

Save the Labels for our Wonderful Presents.

REDMAN'S  
Branches throughout the District.

"Come you on foot, train, 'bus or car,  
Here's 'WELCOME!' to our fine BAZAAR."

## Bazaar Alphabet.

All you can afford, please spend.  
Bring your relatives, friends, and enemies, if possible.  
Come often. We need you every hour.  
Don't worry, except when attacking the eatables.  
Experience the feelings of a philanthropist for once.  
Fully £1,000 is needed. And HOW!  
Generosity has become rarer than the Dodo. Revive it.  
HELP! HELP! HELP! Who? US! And then some.  
Ignore people who wish to borrow your bag. Fill it yourself.  
Join in the opening chorus each day. Lowerhouse anthem: "Sweet  
Buy and Buy."  
Kindly stop, look, and listen, but for heaven's sake don't pass our  
"EATS" Stall.  
Leave home burdened with "brass." Return laden with goods.  
Make several tours round the bazaar daily, to find if you've missed  
"owt."  
Never say "No, No!" to any Nanette who is acting as a sales-lady.  
Open your wallet and hope for the best. We have it.  
Put your troubles in the kit-bag, and the season ticket in your  
pocket.  
Question no statement made. Our staff rivals George Washington.  
Require assistance to take your purchases home, and make the  
neighbours envious.  
Send the children. But not financially embarrassed.  
Test all the "treats." Do you more good than monkey-gland.  
Useful utensils, presents, perquisites, and pots abound.  
Volunteer for anything, even the subscription list.  
Where there's a will there's a way. But don't "make it" until  
you've been "Bazaared."  
Xpel thoughts of self and become a premature Father Christmas.  
Yodel if you want, so long as we grasp your "notes."  
"Zounds!" Exclamation in Olde Englishe emanating from  
"skinned" visitor.

"I expect to pass through this world but once. Any good, therefore,  
that I can do, or any kindness that I can show to any fellow-creature, let  
me do it now. Let me not defer or neglect it, for I shall not pass  
this way again."



*The best*  
**FOOTBALL**  
**REPORTS**

*and the latest news*  
*of ALL the Sports*  
*are in the*  
**SPORTS**  
**TELEGRAPH**

*First thing*  
*Saturday Evenings*

---

---

LOWERHOUSE CRICKET CLUB.

— — —  
**Grand Bazaar**



TO BE HELD IN

St. John's School, Gannow Lane, Burnley.

— ON —

Thursday, Friday and Saturday,  
Nov. 15th, 16th and 17th, 1934.

---

---

The  
Bazaar Queen.



Miss Clara Howarth.





## LADIES' COLLECTION, 1934-35.

We have pleasure in announcing that our New Collection of Ladies' Cloths are ready, and we feel sure these will be to your entire satisfaction.

Our Styles are the work of a well-known Paris Fashion Artist, and we are confident that his designs will have your unqualified approval. We say to you, therefore, order your New Coat now.

# Tom Knowles,

150. Padiham Road :: :: Burnley.

Telephone 129 Padiham.

## J. Wilkinson & Sons

~~~~~

FAMILY BUTCHERS,

~~~~~

3, Church Street, Padiham.

\*\*\*\*\*

Hams, Bacon and Sausage a speciality. Pork in Season.

\*\*\*\*\*

ORDERS PROMPTLY ATTENDED TO.

"Friends! Englishmen! Countrymen! You have witnessed our players caught and bowled, but never let it be said that you permitted the old club to be "stumped."

## History of Lowerhouse Cricket Club.

PREVIOUS to starting on their present ground, there were two clubs in Lowerhouse playing under the names of "Garibaldians" and "Britannia," the first one playing on a ground near the Griffin Hotel and the latter one on a ground called the "Holme." In August, 1862, these two clubs met together and after their meeting approached the late Mr. James Dugdale, who let them have the field they now occupy and which has since been loaned to them by Messrs. Dugdale. The members in their spare time did the draining and relaying of the ground, and eventually made a good playing pitch. Of the founders of the club, mention must be made of the father of the famous three brothers, Branch, who played such a prominent part in Burnley cricket, the father at this time working as a book-keeper in the mill at Lowerhouse. Mention must also be made of the late T. Holland, A. Wolstenholme, W. Whittaker and T. Laycock, who took such a prominent part in playing, and also J. Varley, who was the first president of the club, and W. Smith, the treasurer, while of those who are still members of the club, and who also helped the club materially we have W. Wilkinson, J. Ciapham and R. Grimshaw. We must also mention D. Haworth, who at that time was considered to be one of the finest left-hand bowlers in the district. On one occasion he was playing against Harwood, a noted club at this time, Charley Ullathorne being Harwood's pro. Haworth obtained four wickets in good time, but owing to a dispute arising about a batsman being given out l.b.w., the match was abandoned. It was contended that a batsman could not be given out l.b.w. to a left-hand bowler. Haworth subsequently went to Rochdale to join his brother in the business of a printer, and a few years ago he came over to Lowerhouse to be present at one of their matches. At this time Lowerhouse was a good local village team, and amongst its players was I. Walton, who was nicknamed "Bray," after catching Bray out, who was then pro. at Turf Moor. C. Ingham was the wicketkeeper about this time, and it was quite an honour to him when he went to Old Trafford to assist Lancashire against Kent. James Wilkinson was also a good all-round cricketer. After leaving Lowerhouse, he assisted Burnley in 1878, and rendered good service whilst playing at Turf Moor. James Hartley was also a player about this time, and ever since he has taken a great interest in the doings of both players and club up to the time of his death. H. Whittaker, P. Whittaker, W. Crabtree and T. Sagar must also be included in the list of players previous to the days of professionals. It was not until the year 1874 that Lowerhouse claimed a professional of their own, he being called Gibson Price, of Birkenhead, his salary being very

"It is easy enough to be merry when life goes along like a song,  
But the man who can smile is the man worth while when everything goes  
dead wrong."





## CAUTION!

Many things you can safely keep putting off, but having your photograph taken is not one of them.

For your family and friends' sake, take the opportunity of being photographed NOW by:—

*Edgar Bradshaw*

**PADIHAM.** Tel. 182.

Eight photographs accepted for the P.P.A. Exhibition, London, 1934.

## Sherburn's, CONFECTIONERS.

DINNERS, TEAS,  
AND SUPPERS.

All Kinds of Cake Decorations  
at Lowest Prices.

wine and Champagne  
on Draught.

54, Manchester Road,  
Burnley.

TEL. 1119.

Our Speciality:  
SMILING DINNER.

Consult!

## H. L. Croasdale,

M.P.S., M.I.C.O.,

Qualified Chemist  
:: and Optician, ::

12, Lowerhouse Lane,  
for all Eye Troubles.

National Health Prescriptions Dispensed  
Personally, Accurately and Quickly.

Pure Drugs, Patent Medicines, Toilet  
Requisites, Photographic Materials, and  
All Surgical Appliances in Stock.

"We know a bank where no wild flowers grow,  
But there are clamorous creditors, don't you know?  
And if you do not help us, as of yore,  
Our signature tune will henceforth be 'Owen Moore'!"

HISTORY.—Continued.

small in comparison to present-day professionals' salaries. On the whole, he did very well for the club, his average at the finish of the season being: Batting, 9 innings, 1 not out, highest score 54, total runs 246, average 30.75; bowling, 25 wickets, average 17.2. Coming to more recent years, we have had some very good players, amongst whom might be mentioned the late Sam Barnes, Richard Holden and J. H. Sherman, also W. Bowling. In 1890 a most remarkable occurrence took place with regard to the club's prize for the best aggregate, S. Barnes and W. Bowling tying with 209 each.

One of the outstanding figures in connection with Lowerhouse is T. Shutt, who has filled professional engagements with Stalybridge, Perth, Howick, Liverpool Northern, Lowerhouse, Rishton and Read. His performances with Lowerhouse with both bat and ball have been good, and as an amateur member of the team he knocked up three centuries, whilst he hit up two centuries as an amateur for Burnley. His feats include, in 1895, \*173, which for a time stood as a Lancashire League record, his centuries in addition for Lowerhouse being, \*102 in 1909 and \*113 in 1910. T. Shutt has also rendered splendid service with the ball, having the best average on record as an amateur, 76 wickets in 1910. Other centurions for the club are: Vost (pro.), 112 and \*110 in 1903, and \*100 in 1905; R. Holden, \*110 in 1896; J. Cook, 118 in 1901; W. Whittaker, 100 in 1906 and 122 in 1911. Lowerhouse have also produced a county player in J. S. Heap, who joined the staff in 1903. This does not in any way exhaust the list of excellent batsmen and bowlers who have done excellent work for the club. To W. Cook (pro.) belongs the honour of having taken the most wickets in one season, 130 in 1920, while the highest aggregates for the club have been made by Harrison (pro.) 692 in 1913, and J. Cook (amateur) 555 in 1900.

In 1873 the first Amateur Athletic Sports were held at Lowerhouse on August 23rd, and these resulted in a profit of £11 16s. 9½d., the receipts being £30 5s. 3½d. expenses £18 8s. 6d. These sports were held annually for a period of 32 years, the last being on June 24th, 1905.

Mr. Wilkinson the late secretary, was appointed in 1882, and with the exception of two years during which Mr. J. H. Sherman acted as secretary, he fulfilled this position until 1915. During his office as secretary, a few figures are given from the balance sheet which will no doubt be interesting. In 1882 the gate receipts were £19, members' subscriptions £34, number of members 93, total receipts £218, expenses £197, professional's wages £37. In 1892 the gate receipts were £49, members' subscriptions £61, professional's wages £110, total receipts £562 (including £300 from sports), and expenses £535. In 1902 the gate receipts, with the addition of refreshments, were £180, members' subscriptions £175, total receipts £648, expenses £591. In 1913 the gate receipts, with refreshments, were £169, members' subscriptions £172, total receipts £446. On the season's working it showed a loss of £68;

"The measure of interest in our club is the proportion of sacrifice which you are prepared to make."



TRY - -  
**WARBURTONS**  
FOR YOUR NEXT  
**Carpet or Floorcovering.**

---

---

**Linoleum and Oilcloth Fitted Free.**  
**Satisfaction and Service Guaranteed.**  
**Fitted Carpets a Speciality.**  
**Estimates Given Free.**

\* \* \*

When considering new **Window Furnishings**, do not forget we hold the Largest Stocks in the District of the Latest Shades and Colourings at the Lowest Possible Prices. Also the Newest Designs in Laces, Nets, Etc. Pelmetts made to fit to any type of Window. Loose Covers made to fit all Makes of Suites at very low charges.

---

---

NOTE ADDRESS:

**Market Warehouse, Burnley.**

Established 1869.

Telephone 4048.

“ Oh, how distasteful to a batsman's ear  
Is the sound of falling timber in his rear.”

HISTORY.—Continued.

total members 570. In 1900 the committee had to make preparation for alterations to the ground owing to a new road being made to Rosegrove. This necessitated the building of a new pavilion and putting up good hoarding on one side of the field. The pavilion was built during the winter, and was formally opened in May, 1901, by Mr. G. T. Gill, president of the Lancashire Cricket League, the total cost of alterations being about £400. Towards this the committee had to get a loan of £250 from J. T. Dugdale, Esq., and it was for the purpose of clearing off this and also the overdraft at the bank that a bazaar was held in 1914.

League cricket was suspended for three seasons during the Great War, and when we came to start again in 1919 we were faced with the big cost of having all our fencing repaired and having to buy new seating for all round the field. To accomplish this we approached our president, Col. A. Dugdale, for the loan of £500, which he willingly loaned the club.

In 1921 we erected an Army Hut and used it as a Tea Room. In March, 1923, a Members' Social Club was formed, and part of the Tea Room was used for this purpose. In 1926 we erected a new Tea Room, the Social Club then having use of all the Army hut.

On Saturday, May 7th, 1927, our 1st XI. dismissed Accrington for 9 runs, F. Webster taking 6 wickets for 3 runs, and C. Tillotson 3 for 5 runs, and one no-ball. On June 9th, 1933, at Bacup, Bacup declared with 230 for 5 wickets. Lowerhouse replied with 231 for 4 wickets, St. Hill playing a splendid innings of 132 not out. The Bazaar held in All Saints' School on April 16th, 17th, and 18th, 1914, realised £378 7s. 7d. The Tea Room ladies held a Sale of Work in 1921 and made a profit of £106 11s. 0d. A Bazaar held in Rosegrove Congregational School, on November 5th, 6th and 7th, 1925, realised £311. Our best gate was when Nelson visited us on Saturday, May 18th, 1929, the sum of £222 0s. 10d. being taken.

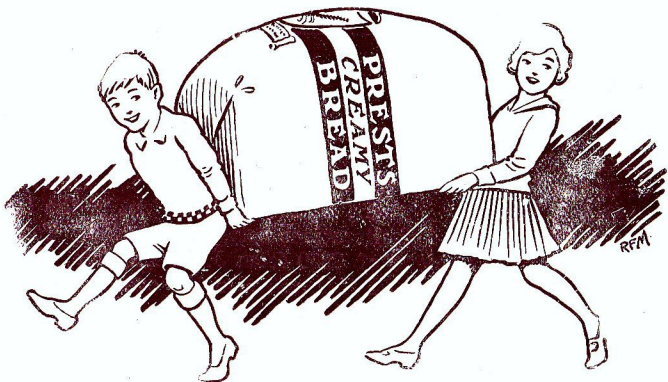
A Supporters' Club was formed in September, 1932. Up to the present they have been a great help to the Cricket Committee. Besides making money grants they have improved the seating accommodation round the ground. We only hope that their organisation continues to prosper, and we appeal to all those who have not already done so to make themselves members of the Supporters' Club, the fee being only 1/- per year, and it is a very good cause. At the end of the last financial year the club's liabilities were £1,906 11s. 8½d.

We are making the present effort to try and considerably reduce this debt, and we beg to make a most strong and sincere appeal to the public of Burnley, Padibam and districts to give us their most needful help and make this Bazaar a huge success.

M. J. WALKER,

Cricket Club Secretary.





## Bringers of Joy!

Happy, healthy children—true bringers of joy—need the best nourishment for growing frames; so wise mothers choose Prest's Creamy Bread—just because it promotes such happy, vigorous growth.

Besides, its delicious flavour adds real enjoyment to any meal.

# Prest's Creamy Bread

LANCASHIRE'S FAVOURITE LOAF.

Sold at all REDMAN'S stores  
and other enterprising shops.

Prests, Ltd., Bakers, Blackburn.

R.F.M.

"Bid me discourse; I will enchant thine ear."



FIRST DAY.

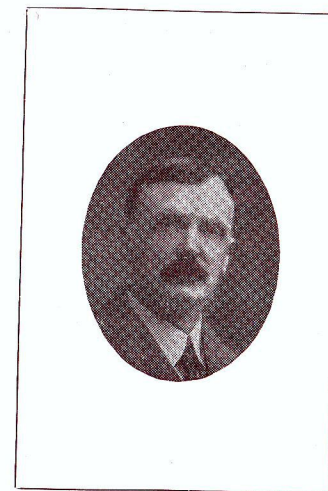
Thursday, November 15th,  
at 3 p.m.

...

Opener:

**Dr. H. H. J. Hitchon,**  
J.P.,

President, Lancashire County  
Cricket Club.



Chairman:

**Edward Crabtree, Esq.,**

President,  
Lancashire Cricket League.

"Oh, make the most of that you have to spend—  
Make it go far;  
But let your purchasing begin and end  
In this BAZAAR."



# Royal London Mutual Insurance Society, Limited.

**MUTUAL OFFICE WITH LARGEST MEMBERSHIP.**

## **ENDOWMENT ASSURANCE.**

When old age is imminent, then it is that the benefit of an Endowment Assurance Policy, taken out in earlier days, is appreciated. There is no better form of investment.

A Royal London Policy is the best policy to secure.

## **FIRE.**

No matter how careful you may be the possibility of a loss by Fire is ever present.

Let the "Royal London" protect you against such a loss.

## **BURGLARY.**

Despite the vigilance of our excellent police force, the depredations of the light fingered fraternity are still of such frequency as to involve the necessity of insuring against the loss of valued possessions, damage, etc.

Let the "Royal London" give you adequate security.

## **MOTOR.**

If you own a car it is essential that you should also have a policy to cover against third party risks.

The Royal London policy will give you unlimited security against claims by third parties.

A Comprehensive Car Policy with the Royal London makes for more joyful motoring.

Reasonable quotations for all classes of Insurance Business can be obtained from

**MR. W. CLITHEROE,**

District Superintendent,

(Tel. 3362)

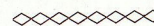
**30, WESTGATE, BURNLEY,**

Or from any of the Society's Representatives.

"Once more unto the breach, dear friends, once more,  
And banish DEBT'S battalions as of yore."

**SECOND DAY.**

**Friday, November 16th, at 3 p.m.**



**OPENER:**

**Albert E. Higham, Esq., J.P.,**

Chairman, East Lancashire Cricket Club.



**CHAIRMAN:**

**J. W. Carmichael, Esq., J.P.,**

Lancashire County C.C. Committee.

"The satisfaction of an ideal is the path to happiness. Our  
Committee's ideal is solvency."



Printing  
Advertising

Ruling  
Bookbinding

THE  
**BURNLEY EXPRESS**  
PRINTING CO., LTD.

:: Printers of this Handbook ::

General Printing  
AND  
Bookbinding  
of all descriptions.

BULL STREET,  
BURNLEY.

Phone  
3036.

Service  
Satisfaction

Copy Writing  
Block-Making

"The time approaches that will with due precision make us know,  
What we shall say we have, and what we owe."



**THIRD DAY.**

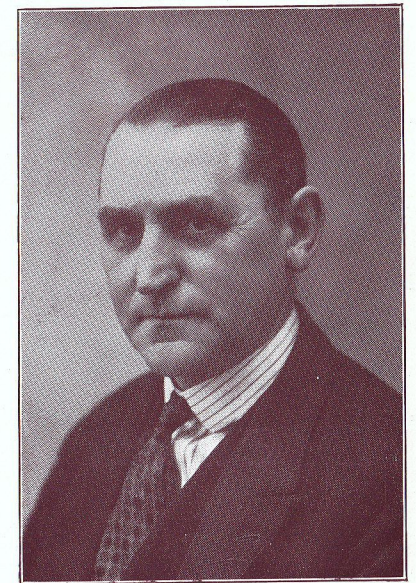
Saturday, November 17th,  
at 3 p.m.

• • •

Opener :

**Edward Drew, Esq.,**  
J.P.,

of Simonstone Hall.



Chairman :

**W. P. Brotherton, Esq.,**  
J.P.,

of Burnley.

"Will this be the end of a perfect day?"

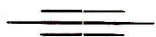
We hope so,

"For the sake of the club down Lowerhouse way."





TRY  
 MASSEY'S  
 PURE  
 BEER



Brewed in Burnley.



W. J. Baldwin, Ltd.,

Wholesale Brush Manufacturers  
 :: and General Merchants ::

Specialities:

THE "DUAL," "HANDY" AND  
 "PREMIER" BRAND BROOMS AND  
 BRUSHES, Household Sweeping  
 Brooms, Mill and Foundry Brushes,  
 Bass and Fibre Brooms, Warp Dressers'  
 Brushes, Machine Twisters' Brushes.

Full Particulars and Prices on application.



Borough Brush Works, Curzon Street,

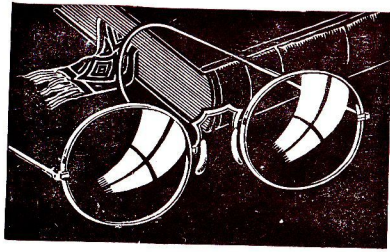
Established 1854. BURNLEY. Telephone 2406.

FOR ALL OCCASIONS



NUTTER'S  
 PURE SWEETS.





**Accurate Sight-Testing.**

**Fine Quality Lenses.**

**Comfortable Frame Fitting.**

These are the Hall-marks of each pair of glasses

I supply and are the reasons why I can

GUARANTEE SATISFACTION.

**T. Ralph**, Ophthalmic Optician,  
F.S.M.C., F.I.O.

48, MANCHESTER ROAD, BURNLEY.

Telephone 2855.

HIGH-CLASS

Confectionery

AND

Milk Bread



**Lawsons'**

128, Lowerhouse Lane,  
Burnley.



Try our Noted Meat Pies and  
Cooked Meats.

**Albert Wright**

Painter, Decorator

AND

Property Repairer.



Your Room Decorated for

**25/-**

Including Ceiling and Border.

Finished Same Day.



**47, Westgate, Burnley.**

"Here's to the grand old game of cricket!  
The bat, the ball, the upright wicket,  
The flannelled players earning fame,  
The crowd which forms a pleasing frame  
To that lovely green Dame Nature yields,  
Which carpets England's cricket fields."

## Bazaar Officials.



President	-	-	-	Mr. T. Redman.
Chairman	-	-	-	Mr. F. Whale.
Vice-Chairman	-	-	-	Mr. T. Brown.
Secretary	-	-	-	Mr. J. Giblin.
Treasurer	-	-	-	Mr. V. W. Wilson.

Ladies' own Materials made up

BY

**Madame Nellie Parker**

(MRS. COWELL)

Dressmaker and Costumier,

45, Rosegrove Lane, Burnley.



Our Speciality: Trousseau and Mourning Orders.



# THE CO-OPERATIVE JEWELLERS

**Silverware**

SILVER makes a delightful luxury of many necessities and adds to the pleasure of personal and household possessions.

We offer excellent values in Table and Decorative Silverware, Dressing Table items, Trophies and Presentation pieces, etc. Say it with Silver on every Gift occasion.

**PRICES:**

Three-Piece Tea Sets, in E.P.N.S., from 25/-. Hall-Marked Silver, £3/10/0.  
 Ladies' Brush Sets, in Enamel, All Colours, from £2/15/0.  
 Silver Sports' Cups, from 12/6. Silver Cigarette Cases, from 11/6.

RELIABLE CLOCKS  
 HANDSOME TIMEPIECES  
 LADIES' & GENT'S WATCHES

**Burnley Co-operative Society,**  
 LIMITED,  
 HAMMERTON STREET.

"When as in silks my lady goes,  
 Then, then (methinks) how sweetly flows  
 The liquefaction of her clothes."

## Drapery Stall.

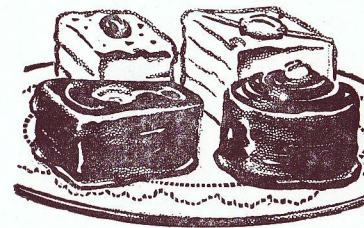
President	- - - -	Mrs. GORNALL.
Secretary	- - - -	Mrs. CLITHEROE.
Treasurer	- - - -	Mrs. WHALE.
Mrs. FISHER.		Mrs. JACQUES.
Mrs. GREEN.		Mrs. JUDGE.
Mrs. JACKSON.		Mrs. RILEY.



"When buying Stockings or Socks, remember that Charity covers a multitude of SHINS."

For High-Class Catering, Telephone 3591.  
 First-Class Service,  
 Supreme Quality,

TRY **J. E. Hargreaves,**  
 Baker and Pastrycook.



We specialise in Bazaars, School Treats,  
 Wedding and Birthday Parties.

All our Bread and Confectionery is  
 Home-Made and of the Best and  
 Purest ingredients only.



Our Addresses:

14, Lowerhouse Lane,  
 Rosegrove.

297, Manchester Road,  
 Burnley.



**"Safety  
First"**

# PADIHAM Building Society

Established 1877.

Assets: £1,023,275. Reserve Fund: £58,000.



## MORTGAGE DEPT.

Large Funds available for advances at reasonable rate of interest.

13/4 per Calendar Month Repays £100 Principal and Interest in 20 years and 36 days.

LET YOUR MOTTO BE—  
"HOME OWNERSHIP."

## INVESTMENT DEPARTMENT.

**SHARES:**—£10, and multiples of £10 may be invested. Interest 3½ per cent. Free of Income Tax. No Entrance Fee and easy withdrawal facilities.

**DEPOSITS:**—Any amount over 1/- may be invested and they are perfectly protected from depreciation or loss. Deposits form a first charge on the whole of the assets of the Society; at the present time each £1 is covered by over £9 of assets. Interest 3 per cent. Free of Income Tax.

No entrance fee and easy withdrawal facilities.

**SOUND INVESTMENTS AND  
A GOOD RATE OF INTEREST.**

Head Office:

**18, Sowerby Street, Padiham.**

**T. Atkinson,**  
*Secretary.*

Never any stall I know, nicer things than ours can show;  
Don't go by!

# Fancy Stall.

President	- - - -	Mrs. REDMAN.
Secretary	- - - -	Mrs. SPENCER.
Treasurer	- - - -	Miss G. DRABBLE.

Mrs. BAINES.	Mrs. NOON.	Miss D. THOMPSON.
Mrs. CONSTANTINE.	Mrs. RILEY.	Mrs. LAWSON.
Mrs. GORNALL.	Mrs. TODD.	Mrs. LUPTON.



"Purchase largely, and your heart will be as light as your pocket."

# The "Adaford,"

Ladies' and Children's  
:: Hairdresser, ::

41, Rosegrove Lane, Burnley.



(Kerka) PERMANENT WAVE  
a speciality.

.....

P.W. - - 15/6

P.C. - - 6/6 no frizz

.....



JOIN OUR CLUB FOR CHRISTMAS.



# "PEN-ORA"

**PEN-ORA MINERAL WATERS** are manufactured under conditions of perfect hygiene from the finest ingredients, blended with pure filtered water from **PENDLE HILL**.

\* **PEN-ORA GRAPE FRUIT CRUSH** contains the actual fruit and is rich in the **vitamins** so necessary to health.

\* **PENDLE TONIC WATER** made from a doctor's recommendations is a palatable drink with **real tonic properties**.

**PEN-ORA MINERAL WATERS** well charged with Carbonic Acid gas are refreshing, stimulating, healthful and of the greatest benefit to the system. **Soda Water, Potass and Lithia Waters** are supplied in syphons with hygienic silver-lined heads: or in screw or crown-stoppered bottles.



**PADIHAM**  
**Aerated Water Co. Ltd.**

Tel. 116. Works: Smithygate.

"Man cannot live by bread alone."

# Refreshment Stall

President	- - - -	Mrs. SYKES.
Secretary	- - - -	Miss SIMPSON.
Treasurer	- - - -	Mrs. HOUGH.

Miss F. AMBLER.	Miss D. HOLLAND.	Mrs. SALKELD.
Miss A. BARRITT.	Mrs. JONES.	Mrs. SMITH.
Mrs. CHARNLEY.	Mrs. KER.	Mrs. STOTT.
Mrs. FORSYTHE.	Mrs. McWHINNEY.	Mrs. WALKER.
Mrs. HARDY.	Mrs. CHELL.	Mr. HARPER.



"Here, with a pot of tea, some 'eats,' and thou,  
'T' will make this place a paradise enow."

Only the Best  
Stationery, Games,  
Toys, Chocolates,  
Sweets and Cigarettes

CAN BE HAD FROM

**Thompson's,**  
THE REPEAT SHOP,  
Post Office, Rosegrove.

We are also noted for  
Freshly Made Chocolates  
and all kinds of Greeting  
Cards.

We specialise in them.  
Service is a good motto,  
and is ours.

**Matt Leeming,**  
High-Class Dairyman,  
Coal Clough Lane.

Fresh New Milk  
Delivered Twice Daily,  
Any District.

New Laid Eggs from our  
own Pens.

Ducks, Geese, Chickens,  
Cream to Order.



"They sing about the 'Old Bull and Bush,'  
And the 'larks' they used to try on;  
But give me a pal and a couple o' 'bob,'  
And a seat in the old 'White Lion!'"

*Cricket!*

Telephone 2776.

*Cricket!*

*The House for Sport.*

## White Lion Hotel,



*"The Centre,"*

*Opposite the Palace, Burnley.*

*Thwaites'*

*Celebrated Beers and Stout.*

*Wines, Spirits and Cigars, all the best.*

Ye Host

HERBERT JACKSON.

"Culinary experts catered for. Articles may also be used as ammunition  
in cases of domestic discord."

## Players' Stall.

HARDWARE, POTS AND POUND STALL.

President	- - -	Mr. E. DRABBLE.
Secretary	- - -	Mr. J. DRABBLE.
Treasurer	- - -	Mr. H. LAWSON.

ASSISTED BY THE FIRST AND  
SECOND ELEVEN PLAYERS.

"Too many cooks may spoil the broth, but none at all incurs our wrath."

"A man wrapped up in himself maketh a very small parcel."—Anon.

## Parcels Office.

Large Parcels of goods  
may be left in the Parcels  
Office at a nominal charge  
and will be delivered to  
your address free.



Prop.: George Fairless.

Tel. 2614.

# CAFÉ ROYAL,



24, Manchester Road,  
Burnley,

Caterers & Confectioners.

---

---

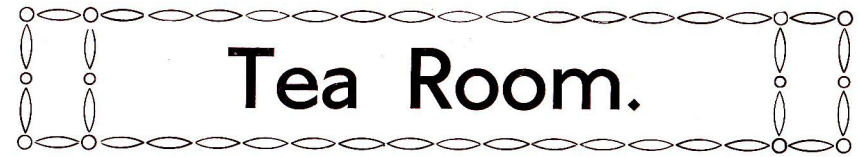
Large Reception Rooms  
for Private Whist Drives  
:: :: and Dances :: ::

---

---

All kinds of Parties catered for on the  
shortest notice.

"Sit down and feed and welcome to our table."



## Tea Room.

President - - - - Mrs. WRIGHT.  
Secretary - - - - Mrs. DRABBLE.  
Treasurer - - - - Mrs. WALKER.

Mrs. BALL	Mrs. FOSTER.	Mrs. R. SMALLEY.
Mrs. BARRAS.	Mrs. GARNETT.	Mrs. W. SMALLEY.
Mrs. BATES.	Mrs. HARGREAVES.	Mrs. TATTERSAL.
Mrs. CUNLIFFE.	Mrs. MILNE	Mrs. WHALLEY.
Miss CROSSLEY.	Mrs. RUTTER.	



"Eat, drink, and be merry—and to-morrow, come again."

---

---

If you want—

Good Groceries

AT

ROCK BOTTOM  
PRICES

— GO TO —

Barker's,

1, Lowerhouse Lane.

You don't look your best

UNLESS YOU HAVE  
VISITED

Belle Brade's

Beauty Parlour and  
Hairdressing Salon,

44, Lowerhouse Lane,  
Rosegrove.



Moderate Charges.

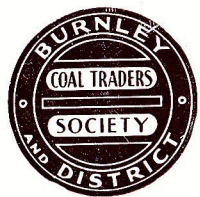
Join Our Club.



**Richard Salkeld,**

COAL MERCHANT,

32, Holyoake Street,  
Lowerhouse, Burnley.



Agent for—

“Sharlston,”

“Wallsend,”

AND

“Cobbles.”

Orders for all classes of Local  
Coal gladly supplied.

DINNERS MADE DAILY.

Our Bread and Teacakes are Famous.

**P. Cunliffe,**

High-class

Pastrycook and Confectioner,

19, Rosegrove Lane,  
Rosegrove.

Bride and Birthday Cakes.

We Cater for Parties.

We use only the best and purest  
ingredients.

Buy your Milk from  
**J. Alderson,**

Back Lane Farm.

× × ×

Guaranteed Fresh,  
Pure and Clean.

× × ×

Straight from the Cow  
to the Consumer.

FOR

Quality Groceries

AND

Provisions

TRY

**Maudsley's,**

27, Lowerhouse Lane,  
Burnley.

**ALL  
FOURS**

CHEST AND LUNG  
MIXTURE

PRE  
WAR  
PRICE

6D

PRE  
WAR  
QUALITY

ADULTS: ONE DESSERTSPOONFUL  
CHILDREN: ONE TEASPOONFUL

PREPARED BY  
**H. HANKEY & CO.**  
WHOLESALE CHEMISTS,  
ROSEGROVE,  
**BURNLEY.**

ASK YOUR DEALER FOR  
**COFTABS**  
AS WELL AS ALL-FOURS.

They are handy in  
your pocket for  
the cold weather.  
One in the mouth  
keeps 'FLU away.

Wholesale from  
**H. Hankey & Co. Ltd.,**  
17, Standish Street,  
BURNLEY.

**Entertainments.**

**CONCERTS,**

including Conjurer, Ventriloquist and Vocalist,

will be held at intervals,  
commencing at 6-30 p.m.



FOR —

*Rich,  
Creamy Milk*  
TRY  
*Jack Lee,*  
*Halstead Farm,  
Rosegrove.*

Telephone: Burnley 2784.

DRINK  
**ST-ORA**  
(Reg)  
AND

Whewell's  
Mineral Waters  
Purest and Best.

WHEWELL'S,  
Hill Top, Burnley.

G. Maudsley,  
10, Lowerhouse Lane,  
Rosegrove.

Specialist in  
Baby Wear.

"Milson," "Chilprufe"  
and "Wolsey."

Ladies' Underwear.

For Something Really Good in  
**HOME MADE BREAD,**

**MEAT PIES,  
MEAT AND POTATO PIES,  
AND CAKES,**

TRY  
**NEWBOLD'S**

High-class Pastrycooks and  
Confectioners,  
**Liverpool Road,  
Rosegrove :: Burnley.**

Bride's and Birthday Cakes  
a Speciality.

"May the best day we have seen be the worst that is to come."



THE CRICKET CLUB COMMITTEE.

Mr. E. DRABBLE.	Mr. J. WALKER.	Mr. T. REDMAN.
Mr. F. CONSTANTINE.	Mr. W. J. FISHER.	Mr. W. WADE.
Mr. J. JACQUES.	Mr. A. WATERWORTH.	Mr. V. W. WILSON.
Mr. R. SMALLEY.	Mr. SAM WRIGHT.	Mr. M. J. WALKER.
Mr. T. WATERWORTH.		

"Resolve to perform what you ought,  
Perform without fail what you resolve."—Franklin.



**Edith Meadowcroft  
School of Dancing.**  
49, Thursby Road :: Burnley.

PRINCIPAL:  
**Miss Edith Meadowcroft,**  
Member of the Association of Operatic  
Dancing of Great Britain, and the  
British Ballet Organisation  
(Inter. Cert.)

Classes and Private Lessons given in all  
Branches of the Art of Dancing—  
Operatic, Greek, Musical Comedy, Tap  
and Ballroom.

Adult "Keep Fit" Class (Limbering,  
Stretching, and Comedy and Tap  
Dancing).

Babies' Class (ages 2—6 years).  
Junior Class (all branches).  
Examination Class.

**Students Prepared for all  
Examinations.**

(Special Attention to Children.)  
For Terms, etc., please apply  
Studio.



Telephone No. 2884 Burnley.

*All particular Meat Buyers buy their  
Meat at*

**W. J. RILEY'S,**

*9, Rosegrove Lane, Burnley.*



*Purveyor of the Best English Meat.*



Pickled Tongues always on hand. Orders promptly attended to.

---

CALL AND SEE OUR

Cooking Ranges, Tile Surrounds,  
Interior Grates and Chimney Pieces.

Largest Selection in the District.



Barless Fires a Speciality.

Agent for Triplex Ranges.

**J. G. HARRISON,**

RANGE AND GRATE SPECIALIST,

28, Market Street and Standish Street,

BURNLEY. Telephone 3405.

**F. A. Stackhouse, M.P.S.,**

:: DISPENSING AND ::  
PHOTOGRAPHIC CHEMIST,

22, Rosegrove Lane, Burnley.



**Bring Your Prescriptions to Me,** and have them made up with Drugs that are always fresh and the purest obtainable.

All Makes of Toilet and Sick Room Requisites in Stock.



**Your Photographic Requirements can be obtained here.  
24-hour Developing and Printing Service.**

---

**M. & J. Harper,**

Confectioners of Distinction,

42, Lowerhouse Lane, Rosegrove.

Our Speciality — Cakes for all occasions.

Try our noted Milk Bread.

---

**New Cafe now open**

:: Only the Best served ::

---

Full catering for Weddings, Funerals, Parties, etc.



# Burnley and District Coal Traders' Society

(Affiliated to the Coal Merchants' Federation of Great Britain,  
Lancashire Area Council).

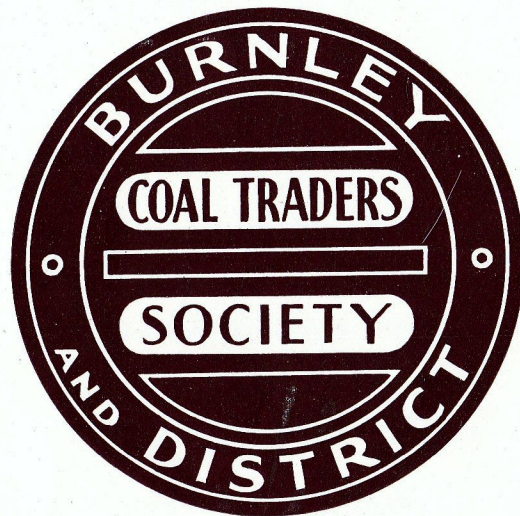
Telephone 2617.

8, YORKSHIRE STREET,

BURNLEY,

LANCS.

All Communications to  
F. C. RILEY, A.L.A.A.,  
Secretary.



**BUY BY THE BADGE.**

When you think about Coal you naturally want a Trader who will supply you with Quality Coal at a reasonable price and at the same time give you service.

**All Traders displaying the above badge will give the Quality and Service at a reasonable price.**

**SO BUY BY THE BADGE.**

# BATTING & BOWLING AVERAGES.

## BATTING—AMATEUR.

The principal batting and bowling averages 1887 to 1934, are as follows:—

	No. of innings	Times not out	Most in innings	Total runs	Average		No. of innings	Times not out	Most in innings	Total runs	Average
1887—S. Barnes .....	9	1	67	157	17.40	1909—W. Whittaker..	20	1	93	456	24.00
W. Bowling .....	16	0	64	240	15.00	T. Shutt .....	20	1	*102	448	23.57
1888—S. Barnes .....	11	2	53	156	17.30	1910—T. Shutt .....	21	3	*113	411	22.83
W. Spencer .....	16	0	63	226	14.20	W. Whittaker..	23	3	79	370	18.50
1889—R. Holden .....	18	1	70	442	26.00	T. Whittaker..	21	3	54	311	17.27
S. Barnes .....	16	3	*55	235	18.10	1911—W. Whittaker..	24	2	122	539	24.50
1890—S. Barnes .....	19	1	41	209	11.11	M. Walker .....	22	2	85	470	23.50
W. Bowling .....	19	0	45	209	11.00	L. Whittaker..	14	4	35	203	20.30
1891—H. Hemingway	20	0	38	228	11.80	1912—T. Whittaker..	25	3	*66	375	17.05
S. Barnes .....	19	0	43	211	11.20	M. Walker .....	23	1	68	357	16.23
1892—R. Holden .....	20	0	45	270	13.10	1913—F. Brown .....	11	0	85	176	16.00
J. H. Sherman .....	23	1	58	250	11.80	H. S. Hughes..	15	0	69	222	14.80
1893—S. Barnes .....	25	2	92	425	18.11	1914—A. Spencer .....	21	4	75	401	23.59
R. Holden .....	25	1	45	307	12.19	J. J. Elliott .....	18	0	84	369	20.50
1894—S. Barnes .....	23	0	59	305	13.60	1915—H. Spencer .....	22	1	67	394	18.76
R. Holden .....	24	1	47	298	12.22	F. A. Brown .....	21	4	*39	268	15.77
1895—J. J. Elliott .....	19	5	26	193	13.11	1916—A. Spencer .....	22	3	67	541	28.47
T. Shutt .....	18	3	*65	157	10.70	W. Whittaker..	18	3	*69	362	24.13
1896—R. Holden .....	20	3	*110	274	16.20	1917-18—No League.					
H. H. Noakes..	22	1	39	224	10.14	1919—J. Jackson .....	24	1	64	352	15.30
1897—Thompson .....	18	6	37	282	15.12	H. Smith .....	22	2	46	294	14.70
Bolton .....	20	1	66	284	14.18	1920—T. Shutt .....	21	0	67	266	12.66
Walker .....	20	1	71	244	11.13	H. Smith .....	22	5	*44	206	12.11
1898—H. Cudworth .....	17	0	85	286	16.14	1921—G. B. Capstick	20	4	*55	245	15.31
R. Wearden .....	15	0	50	210	14.00	R. Towler .....	24	2	*32	252	11.45
J. J. Elliott .....	22	5	*54	233	13.20	1922—R. Towler .....	20	5	*60	313	20.86
1899—R. Holden .....	18	3	31	205	13.10	T. Shutt .....	21	5	*58	235	14.68
J. J. Elliott .....	17	0	55	219	12.15	1923—L. Heap .....	21	5	*55	274	17.12
1900—G. Green .....	26	3	60	437	19.00	A. Spencer .....	21	1	36	217	10.85
J. Cook .....	14	2	72	204	17.00	1924—H. Haworth .....	19	1	36	218	12.11
J. J. Elliott .....	23	1	*53	303	13.17	A. Spencer .....	20	3	32	188	11.05
R. Holden .....	27	2	56	325	13.00	1925—S. Smith .....	13	2	27	142	12.90
1901—J. Cook .....	25	2	118	555	24.30	G. Smith .....	23	3	46	252	12.60
G. Green .....	22	4	*57	414	23.00	1926—J. W. Halstead	23	4	58	302	15.89
M. Walker .....	21	2	*68	325	17.20	A. Spencer .....	22	3	*55	290	15.26
1902—W. Whittaker..	26	0	81	507	19.13	1927—A. Spencer .....	21	5	43	257	16.06
T. Whittaker..	26	1	41	385	15.11	H. Smith .....	26	1	55	360	14.40
M. Walker .....	21	2	*42	226	11.17	1928—J. W. Halstead	21	5	54	349	21.81
1903—J. Holland .....	19	3	77	334	20.14	A. Spencer .....	19	0	94	294	15.47
R. Polton .....	22	3	90	374	19.13	1929—A. Dobson .....	19	2	*70	383	22.52
J. Cook .....	26	0	47	340	13.20	H. Lawson .....	24	1	76	351	15.26
1904—T. Whittaker..	27	5	*76	407	18.11	1930—J. Pollard .....	18	6	65	191	15.91
J. T. Binns .....	11	2	44	152	16.80	A. Dobson .....	16	0	60	250	15.62
J. J. Elliott .....	22	2	67	305	15.50	1931—H. Lawson .....	21	5	66	485	30.31
1905—T. Shutt .....	16	1	*173	418	27.13	R. Silverwood..	10	2	66	194	24.25
T. Harrison .....	21	2	66	369	19.18	1932—H. Spencer .....	24	0	90	441	18.37
T. Whittaker..	24	3	*49	370	17.13	H. Lawson .....	21	2	*44	306	16.10
1906—T. Shutt .....	20	1	*82	502	26.80	1933—L. S. Priestley	12	1	79	256	23.27
W. Whittaker..	23	2	*100	463	22.10	G. Bridge .....	21	5	*50	241	15.06
1907—A. Shutt .....	9	4	*33	94	18.40	1934—H. Lawson .....	13	4	58	295	32.77
T. Shutt .....	17	1	61	204	12.12	A. Dobson .....	26	1	67	406	16.24
1908—W. Whittaker..	22	2	84	470	23.10						
T. Whittaker..	23	2	*62	437	20.17						
J. J. Elliott .....	23	2	*61	355	16.19						



# IN BURNLEY



IT'S

## Wells Bros. & Sons

"Where the Wreaths come from"

The Right Flowers  
In the Right Way  
To the Right Place  
At the Right Time  
At the Right Price

# WELLS BROS. & SONS,

Members of Florists' Telegraph  
Delivery Association.

Telephone  
2831.



Telegraphic  
Address:  
"Wells  
Market,  
Burnley."

1, 32 and 33, Market Hall, Burnley.

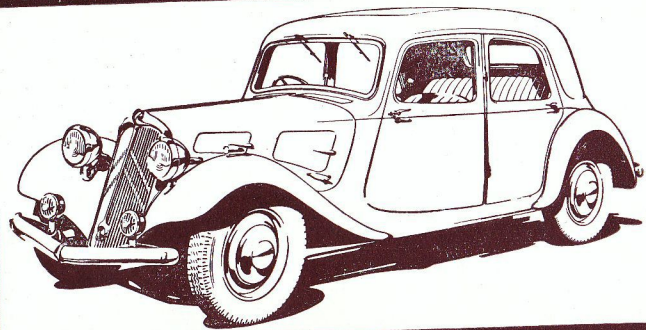
## BATTING AND BOWLING AVERAGES.—Continued.

### BOWLING—AMATEUR.

	Overs	Maid'ns	Runs	Wick'ts	Average		Overs	Maid'ns	Runs	Wick'ts	Average
1887—J. Sherman ...	810	53	256	38	6.28	1911—T. Whittaker..	185.2	18	541	45	12.02
1888—J. W. Haken..	193	69	321	41	7.34	W. Pollard ....	77.3	7	283	22	12.96
1889—F. Whittaker... 136	49	198	27	7.90	1912—H. Spencer ....	114.4	24	317	25	12.68	
F. Stephenson. 83	18	186	19	9.15	A. Green .....	77	6	270	20	13.15	
1890—J. Carey .....	43.2	7	108	8	13.40	1913—T. Shutt .....	284.4	37	884	63	14.03
1891—J. Sherman ...	159.4	61	361	35	10.11	A. Green .....	78.1	7	314	18	17.14
1892—Hemingway ...	46.1	31	410	33	12.14	1914—F. Shutt .....	236	22	783	39	20.07
J. Sherman ...	252.1	74	557	31	17.30	A. Green .....	41.2	1	207	10	20.70
1893—W. Crabtree ..	59.2	9	201	7	28.50	1915—H. Spencer ....	276.2	41	912	63	14.48
J. Ashworth ...	82	13	234	8	29.20	T. Shutt .....	91.2	9	300	20	15.00
1894—T. Shutt .....	58.1	10	172	13	13.30	1916—W. Whittaker. 255.2	40	716	70	10.22	
1895—T. Shutt .....	267.1	61	674	55	12.14	T. Shutt .....	235.2	49	630	46	13.69
1896—H. Noakes ....	205	56	539	41	12.47	1917-18—No League.					
1897—Elliott .....	53.1	16	157	9	17.40	1919—W. Pollard ....	194.2	27	629	56	11.23
Robinson .....	120.3	42	530	24	22.20	T. Shutt .....	228.2	34	730	45	16.22
1898—Elliott .....	54	3	215	5	43.00	1920—T. Shutt .....	286	47	686	68	10.09
1899—W. Whittaker. 119	30	321	16	20.10	H. S. Hughes..	57	12	147	10	14.70	
1900—J. T. Binns ...	72.4	12	235	22	10.15	1921—H. Pickthall ...	165	30	550	45	12.22
W. Whittaker. 338.2	56	934	48	19.22	T. Shutt .....	199.2	20	606	37	16.37	
1901—J. S. Heap ...	54	5	191	16	11.15	1922—H. Pickthall ...	180.1	22	610	48	12.70
A. Pate .....	156.4	21	466	34	13.24	T. Shutt .....	268.5	38	792	56	14.13
W. Whittaker. 261	40	799	40	19.39	1923—T. Shutt .....	217.4	32	592	43	13.76	
1902—J. S. Heap ...	109	20	333	32	10.13	J. W. Halstead	126.1	34	303	20	15.15
A. Pate .....	266.2	52	715	67	10.45	1924—T. Shutt .....	285	54	680	53	12.83
W. Whittaker. 101.2	12	312	25	15.17	J. W. Halstead	163.4	29	391	29	13.48	
1903—A. Pate .....	329	63	903	56	16.70	1925—W. Wade .....	48	15	102	13	7.84
L. Whittaker..	120.3	10	314	23	17.30	T. Shutt .....	96.3	15	264	18	14.66
1904—A. Pate .....	351.1	64	983	70	14.03	J. W. Halstead	140.4	25	397	26	15.26
T. Whittaker..	145	17	486	30	16.60	1926—J. W. Halstead 293.2	91	621	41	15.14	
1905—T. Whittaker..	217	28	650	46	14.60	C. Tillotson ...	78	9	260	17	15.29
T. Shutt .....	146.2	15	545	38	14.13	1927—W. Wade .....	136.4	27	394	24	16.41
Hemingway ...	181.3	23	662	43	15.17	C. Tillotson ...	144	31	345	19	18.15
1906—T. Shutt .....	208.4	46	492	64	8.44	1928—C. Tillotson ...	167.1	50	375	24	15.62
W. Whittaker. 114.2	13	378	26	14.14	J. W. Halstead	140.4	31	351	22	15.95	
1907—T. Shutt .....	197	31	502	74	6.58	1929—J. Pollard .....	201.1	36	575	35	16.42
W. Whittaker. 78.4	12	265	22	12.10	W. G. Cook ...	68	6	215	12	17.91	
1908—T. Shutt .....	286	54	719	66	10.59	1930—J. Pollard .....	237.1	67	586	39	15.02
T. Whittaker..	102.2	6	356	19	18.14	J. W. Halstead	152	19	439	26	16.83
1909—W. Whittaker. 106.1	19	270	26	10.38	1931—A. Green .....	183.3	42	451	33	13.66	
T. Shutt .....	227.5	46	578	54	10.70	J. W. Halstead	181	46	394	28	14.07
1910—T. Shutt .....	266.4	57	642	76	8.44	1932—A. Green .....	271.5	50	735	51	14.41
W. Whittaker. 95.1	14	275	18	15.27	W. G. Cook ...	147.4	26	459	27	17.00	
T. Whittaker..	132.5	14	397	25	15.88	1933—A. Green .....	174.4	37	793	40	19.82
						W. G. Cook ...	136.5	13	519	22	23.59
						1934—W. G. Cook ...	187	34	673	33	20.39
						E. Smith .....	176	28	580	23	25.21



# CITROËN



**SUPER MODERN  
TWELVE**  
The car that is 2 YEARS AHEAD

- FRAMELESS CONSTRUCTION
- FRONT WHEEL DRIVE
- INDEPENDENT WHEEL SUSPENSION
- TORSION BAR SPRINGING
- AERODYNAMIC BODY DESIGN
- UNIMPEDED FLOOR AREA
- AMAZING STABILITY
- REMARKABLE ROAD VISIBILITY

Prices from  
**£250**

You must ride in this car to realise its outstanding superiority over all previous conceptions of perfect motoring. A trial run gladly arranged by:—

**HEBDEN BROS. LTD.,**  
223-225, Accrington Road, Burnley.  
TEL. 3816

## BATTING AND BOWLING AVERAGES.—Continued.

### BATTING—PROFESSIONAL.

### BOWLING—PROFESSIONAL.

		No. of innings	Times not out	Most in innings	Total runs	Average			Overs	Maid'ns	Runs	Wickets	Average
1887—F. Blake	.....	15	1	110	310	20.10	1887—F. Blake	.....	249	101	486	61	7.59
1888—S. Thorpe	.....	16	0	23	128	8.00	1888—S. Thorpe	.....	292.3	115	407	51	7.50
1889—S. Thorpe	.....	17	2	69	277	18.70	1889—S. Thorpe	.....	291	108	481	64	7.33
1890—W. Hampson	.....	18	1	*77	354	20.14	1890—W. Hampson	.....	360	116	702	79	8.70
S. Thorpe	.....	10	0	54	100	10.00	S. Thorpe	.....	176.4	50	559	22	16.70
W. Attewell	.....	6	2	*19	41	10.10	W. Attewell	.....	82	23	132	14	13.10
1891—G. Smailes	.....	19	2	*62	538	25.13	1891—G. Cort	.....	215.3	69	438	42	10.18
G. Cort	.....	20	0	84	342	17.20	G. Smailes	.....	170.4	56	347	22	15.17
1892—J. Madden	.....	22	1	31	189	9.00	1892—J. Madden	.....	415.4	129	800	64	12.32
W. Priestley	.....	23	1	34	183	8.70	W. Priestley	.....	322.3	86	709	46	15.19
1893—J. Goodband	.....	27	0	51	202	7.13	1893—J. Soult	.....	516.4	155	1101	103	10.81
J. Soult	.....	26	1	27	170	6.20	J. Goodband	.....	515	149	1093	85	12.73
1894—S. Hardy	.....	24	2	61	413	18.17	1894—S. Hardy	.....	444.2	147	817	93	8.73
J. H. Brown	.....	18	1	19	87	5.20	J. H. Brown	.....	343	77	700	56	12.28
1895—A. Berry	.....	24	7	97	618	36.60	1895—S. Hardy	.....	362.4	106	799	62	12.55
S. Hardy	.....	22	2	66	390	17.16	A. Berry	.....	172.1	31	490	28	17.14
1896—S. Hardy	.....	20	2	*77	448	24.16	1896—S. Hardy	.....	400	94	884	67	13.13
A. Berry	.....	22	1	67	383	18.50	A. Berry	.....	228	53	633	32	19.25
1897—G. Porter	.....	19	2	62	180	10.10	1897—G. Porter	.....	440.4	123	1081	60	18.10
J. Lilley	.....	11	1	28	98	9.80	A. Wardle	.....	139.4	42	295	16	18.70
A. Wardle	.....	6	1	11	27	5.20	J. Lilley	.....	216.1	59	443	22	20.30
1898—B. Gregory	.....	21	2	24	129	6.15	1898—B. Gregory	.....	468	129	1014	80	11.35
A. Wardle	.....	20	1	23	78	4.20	A. Wardle	.....	431	145	843	62	13.37
1899—T. Shutt	.....	25	2	63	386	16.18	1899—T. Shutt	.....	393.4	87	971	87	11.14
B. Gregory	.....	23	0	25	176	7.15	B. Gregory	.....	428.1	107	939	79	11.70
1900—B. Gregory	.....	24	4	12	76	3.16	1900—B. Gregory	.....	502.5	105	1301	108	12.15
1901—B. Gregory	.....	19	3	31	143	8.15	1901—B. Gregory	.....	379	61	1118	95	11.73
1902—T. Poole	.....	20	5	16	55	3.10	1902—T. Poole	.....	337.3	24	783	67	11.46
1903—E. Vost	.....	25	2	*112	658	28.14	1903—E. Vost	.....	285	51	867	57	15.12
1904—E. Vost	.....	28	0	99	574	20.14	1904—E. Vost	.....	372.3	69	1104	75	13.29
1905—E. Vost	.....	26	5	*100	652	31.10	1905—E. Vost	.....	282.4	28	933	37	25.80
1906—J. Pennington	.....	16	3	11	62	4.10	1906—Pennington	.....	305.3	53	892	59	15.70
1907—H. Anthony	.....	19	1	44	253	14.10	1907—H. Anthony	.....	264.2	70	548	66	8.20
1908—H. Anthony	.....	22	2	67	351	17.11	1908—H. Anthony	.....	316.3	60	829	70	11.59
1909—W. Tolson	.....	19	0	40	196	10.31	1909—W. Tolson	.....	285.1	51	658	52	12.65
1910—W. Tolson	.....	21	1	88	536	26.80	1910—W. Tolson	.....	303.1	68	653	69	9.46
1911—W. Tolson	.....	24	0	80	499	20.79	1911—W. Tolson	.....	375.1	61	976	90	10.84
1912—W. Lees	.....	24	3	40	352	16.76	1912—W. Lees	.....	381.1	81	996	66	15.09
1913—R. Harrison	.....	24	2	85	692	31.45	1913—R. Harrison	.....	321.1	41	1109	57	19.46
1914—J. Atherton	.....	22	1	57	345	15.48	1914—J. Atherton	.....	443	87	1199	65	18.44
1915—Geo. Wilson	.....	21	1	70	313	15.65	1915—Geo. Wilson	.....	349.1	69	974	95	10.25
1916-17-18—No Professionals.													
1919—W. Cook	.....	12	0	73	337	28.08	1919—W. Cook	.....	172.3	37	480	57	8.42
1920—W. Cook	.....	22	1	104	436	20.76	1920—W. Cook	.....	384	99	885	92	9.61
1921—W. Cook	.....	25	1	40	232	9.66	1921—W. Cook	.....	374.3	88	949	130	7.30
1922—W. Cook	.....	25	1	64	452	18.83	1922—W. Cook	.....	427.5	110	1004	106	9.46
1923—J. A. Cuffe	.....	24	3	*78	491	23.38	1923—J. A. Cuffe	.....	326	84	788	81	9.72
1924—J. A. Cuffe	.....	20	1	49	197	10.36	1924—J. A. Cuffe	.....	331.5	59	676	48	14.08
1925—C. P. Carter	.....	13	1	*39	111	9.25	1925—C. P. Carter	.....	228.1	28	755	44	17.15
1926—C. P. Carter	.....	21	0	16	113	5.38	1926—C. P. Carter	.....	457.1	98	1130	85	13.29
1927—Fred Webster	.....	26	0	93	522	20.07	1927—F. Webster	.....	467.2	145	896	129	6.94
1928—Fred Webster	.....	23	2	72	567	27.00	1928—F. Webster	.....	410.1	121	888	81	10.96
1929—Fred Webster	.....	22	2	*106	606	30.30	1929—F. Webster	.....	397.5	114	940	91	10.32
1930—H. Spencer	.....	23	2	46	355	16.90	1930—H. Spencer	.....	224.1	39	606	28	21.64
1931—E. St. Hill	.....	20	0	46	288	14.40	1931—E. St. Hill	.....	372.4	108	830	68	12.20
1932—E. St. Hill	.....	23	0	85	477	20.73	1932—E. St. Hill	.....	441.4	100	1068	77	13.87
1933—E. St. Hill	.....	25	4	*132	602	28.66	1933—E. St. Hill	.....	393.2	80	1050	56	18.82
1934—J. R. Milne	.....	26	1	78	439	17.56	1934—J. R. Milne	.....	450.1	103	1103	88	12.53



Don't forget  
to shop at—  
**Handy Stores,**

82, Lowerhouse Lane.  
Rosegrove.

**SMITH  
AND  
SHACKLETON.**

◆◆◆◆◆◆◆◆◆◆  
Cream Ices.

Guaranteed Pure.

◆◆◆◆◆◆◆◆◆◆  
14, Tabor Street,  
Burnley.

Telephone 2569.

*No need to worry about your dinner if you  
give your order to*

**J. R. SMITH,**

HIGH-CLASS BUTCHER,

219, Padiham Road, Burnley.

◆◆◆◆◆◆◆◆◆◆  
It will be delivered promptly, and satisfaction guaranteed.

Telephone 4038.

**Wilkinsons,**  
26, Rosegrove Lane.

◆◆◆◆◆◆◆◆◆◆  
**Ladies' Outfitters**  
(DRESSES, COATS, Etc.).

◆◆◆◆◆◆◆◆◆◆  
**Bear Brand Hosiery,**  
from 1/11½ to 6/11,  
In Silk, Cashmere, and Wool  
Lined.

THE  
**Noted Little Shop**

FOR HIGH-CLASS  
**GROCERIES,**  
**PROVISIONS,**  
**CHOCOLATES,**  
**CONFECTIONERY,**  
**CIGARETTES,**  
**TOBACCO, Etc.**

Novelties for Christmas.  
Join our Club.

◆◆◆◆◆◆◆◆◆◆  
**Ernest Shaw,**  
53, Lowerhouse Lane,  
**ROSEGROVE.**

◆◆◆◆◆◆◆◆◆◆  
Phone 3823 Burnley.

**HARTLEY BROS.,**

194, PADIHAM ROAD, BURNLEY.

◆◆◆◆◆◆◆◆◆◆  
**Heating Engineers.**  
◆◆◆◆◆◆◆◆◆◆

:-: Plumbing in all its Branches. :-:



Have your Decorations  
done by a Decorator.

Consult  
**Ronald Bushby,**  
Rosegrove.

We stock Leyland Paints and  
all Sundries.

## H. Fairclough

is sole agent for  
"His Masters Voice,"  
"Philco," and  
"Kolster Brandes,"  
for Rosegrove and District.

Accumulators charged by the best and  
latest charging plant.

Hire Purchase arranged on  
any Receiver.

::: All electric goods supplied. :::

Note only address:

43, Lowerhouse Lane,  
Nr. LOCKYER AVENUE,  
Rosegrove ::: Burnley.

## Wallace Knowles,

WHOLESALE TRIPE DRESSER, OIL AND  
TALLOW MANUFACTURER.

Best quality Tripe, Heels and Trotters.

::: Shops supplied anywhere. :::

Works — Park Road, Padiham, Lancs.

TELEPHONE 224.

ESTABLISHED 1904.

## RECORDS OF THE CLUB.

### LIST OF PROFESSIONALS.

1874—Gibson Price	1903-4-5—E. Vost
1875—S. Gascoyne	1906—J. Pennington
1876—S. Gascoyne	1907—H. Anthony
1877—A. Thornton	1908—H. Anthony
1878—J. Sykes	1909-10-11—W. Tolson
1880—H. Hibbert	1912—W. Lees
1881—W. Mattock	1913—R. Harrison
1882—W. Mattock	1914—J. H. Atherton
1883—H. Slater	1915—G. A. Wilson
1884—H. Slater	1916—
1885—G. Porter	1917—
1886—G. Waller	1918—
1887—F. Blake	1919—W. Cook
1888—S. Thorpe	1920—W. Cook
1889—S. Thorpe	1921—W. Cook
1890—S. Thorpe, W. Hampson, and W. Attewell	1922—W. Cook
1891—G. Cort and G. Smailes	1923—J. A. Cuffe
1892—J. Madden and W. Priestley	1924—J. A. Cuffe
1893—J. Goodband and J. Soult	1925—C. P. Carter
1894—S. Hardy and J. H. Brown	1926—C. P. Carter
1895—S. Hardy and A. Berry	1927—F. Webster
1896—S. Hardy and A. Berry	1928—F. Webster
1897—G. Porter and J. Lilley	1929—F. Webster
1898—B. Gregory and A. Wardle	1930—H. Spencer
1899—B. Gregory and T. Shutt	1931—E. St. Hill
1900—B. Gregory	1932—E. St. Hill
1901—B. Gregory	1933—E. St. Hill
1902—T. Poole	1934—J. R. Milne

### COMPARISONS.

The points scored by Lowerhouse during the League period, and their position, are appended.

Year.	Points.	Position.	Year.	Points.	Position.
1892.....	10	13	1913.....	19	eq. 11-12
1893.....	18	11	1914.....	13	14
1894.....	26	eq. 7-11	1915.....	29	eq. 5-6
1895.....	18	eq. 12-13	1916.....	20	eq. 9-10
1896.....	14	13	1917-18		No League.
1897.....	15	14	1919.....	21	10
1898.....	18	14	1920.....	28	5
1899.....	20	13	1921.....	24	10
1900.....	17	eq. 11-14	1922.....	21	11
1901.....	24	9	1923.....	20	11
1902.....	25	9	1924.....	17	14
1903.....	23	9	1925.....	17	11
1904.....	21	eq. 11-12	1926.....	17	14
1905.....	24	9	1927.....	24	9
1906.....	30	eq. 4-5	1928.....	25	eq. 6-9
1907.....	28	eq. 5-6	1929.....	27	5
1908.....	31	eq. 4-5	1930.....	20	11
1909.....	27	eq. 6-7	1931.....	31	4
1910.....	30	eq. 2-4	1932.....	27	5
1911.....	29	eq. 5	1933.....	20	eq. 11-13
1912.....	17	14	1934.....	17	eq. 13-14



"Excellent beer is found within the 'Cricketers' Arms,'  
Courtesy, cleanliness, and good company are added charms."



# Cricketers' Arms,

LOWERHOUSE.



Massey's Ales and Stout,  
Bass, Worthington, etc.



Proprietor - Albert Parker.



"Oh, what a glory doth the world put on  
For him who, with a fervent heart, goes forth  
Under the bright and glorious sky, and looks  
On duties well performed, and days well spent."

## Acknowledgments.

The Bazaar Officials desire to  
express their sincere thanks—

- To the Openers and Chairmen for their presence and support.
- To the Stallholders and Committees who have worked so  
diligently for the success of the Bazaar.
- To all who have laboured to entertain us.
- To all Firms and Individuals who have given us of their  
goods or money.
- To all Advertisers in our Handbook; and
- To all Friends who have in any way assisted us to make the  
Bazaar a great success.

"How nice, having spent my money, and sent all my goods, I have  
only myself to carry home."



# Daniel Helm & Co., LTD.

Builders and Contractors,  
Monumental Masons,  
CEMETERY ROAD, PADIHAM.



Memorials in Stone, Marble,  
and Granite.

Designs and Estimates  
on Application.



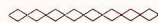
Telephone 63.

---

---

## BROWN

Newsagent :: Lowerhouse Lane.



CHRISTMAS CARDS, NEW YEAR CARDS,  
AND CALENDARS.



All New Stock. See Window Display.

**JOIN OUR CLUB.**

TOYS AND GAMES, Etc.

Established 1863.

Telephone No. : Burnley 3783.

# H. HUNTER, LTD.

(LATE ATKINSON),

HATTERS, TAILORS, CLOTHIERS, SHIRTMAKERS AND  
COMPLETE OUTFITTERS FOR MEN AND BOYS.



61, St. James' Street,

:: :: BURNLEY :: ::

Reg. Office : 29, Abingdon Street, Blackpool.



Town Agents  
for  
Jaeger Wear.

...

Burberry  
and  
Asquacutum  
Raincoats, etc.

Tress,  
Woodrow's,  
Christy's  
and  
Lincoln Bennett's  
Hats.

...

"Doggie Caps."



Something for all, both great and small,  
Is found within these Stores;  
And for a nimble "tanner"  
The article is yours.

It isn't  
**CRICKET !!**  
to shop out of  
**BURNLEY**  
unless it is absolutely necessary.



**WOOLWORTHS,**  
St. James' Street,  
:: :: BURNLEY :: ::

can supply a lot of your requirements  
and there is

**NOTHING OVER**

**6<sup>d.</sup>**